

## Han EMC Base Panel for Central Lever

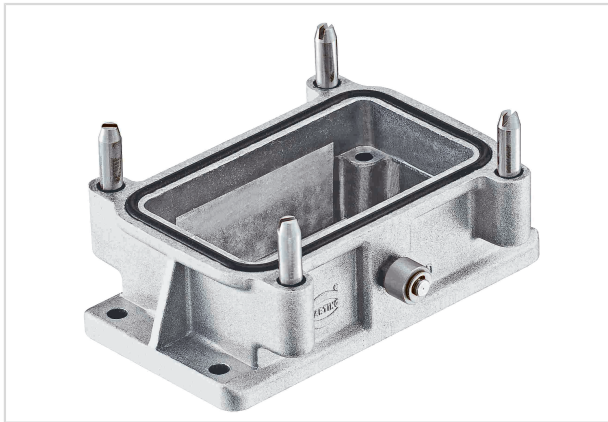


Image is for illustration purposes only. Please refer to product description.

Part number	09 62 010 0381
Specification	Han EMC Base Panel for Central Lever
HARTING eCatalogue	<a href="https://b2b.harting.com/09620100381">https://b2b.harting.com/09620100381</a>

### Identification

Category	Hoods/Housings
Series of hoods/housings	Han <sup>®</sup> EMC
Type of hood/housing	Bulkhead mounted housing

### Version

Size	10 B
Locking type	Central locking lever (on the hood)
Field of application	Hoods/Housings for higher EMC requirements

### Technical characteristics

Limiting temperature	-40 ... +125 °C
Note on the limiting temperature	For use as a connector according to IEC 61984.
Degree of protection acc. to IEC 60529	IP65
Type rating acc. to UL 50 / UL 50E	4 12

### Material properties

Material (hood/housing)	Aluminium die-cast
Surface (hood/housing)	Uncoated
Colour (hood/housing)	Unpainted
Material (seal)	NBR
RoHS	compliant
ELV status	compliant



**Pushing Performance**  
Since 1945

## Material properties

China RoHS	e
REACH Annex XVII substances	Not contained
REACH ANNEX XIV substances	Not contained
REACH SVHC substances	Not contained
California Proposition 65 substances	Yes
California Proposition 65 substances	Nickel Naphthalene

## Specifications and approvals

Approvals	DNV GL
UL / CSA	UL 1977 ECBT2.E235076 CSA-C22.2 No. 182.3 ECBT8.E235076
CE	Yes

## Commercial data

Packaging size	1
Net weight	133.8 g
Country of origin	Germany
European customs tariff number	85389099
GTIN	5713140073258
eCl@ss	27440202 Shell for industrial connectors